

Added on: September 11, 2024 at 5:15 pm

Select Your Form

IL Extension

Name

Talon Becker

Email

tbecker2@illinois.edu

Date

September 11, 2024

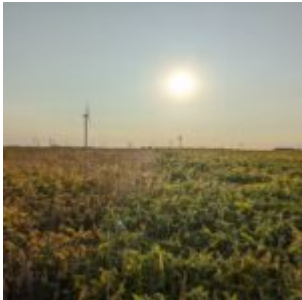
County

Douglas

Region/State

Region 5

Field Photo Upload 1



Field Photo Upload Caption 1

Soybean fields nearing maturity; late R6 (full seed) on the right, late R7 (beginning maturity) on the left

Which of the following best describes current conditions in this county?

Near Normal

Quick synopsis of conditions that will appear in the main feed

Harvest is not far off for some of the early-planted fields in Douglas County, but with the extended planting season, there are still plenty of green fields as well in the county. All corn fields surveyed were at least at R5 (dent) with 50% milk line, and several were just reaching R6 (black layer) or within a few days of it. Soybean fields generally ranged from late R6 (full seed) through R7 (beginning maturity), and I spotted a couple fields within a couple more warm days of R8 (full maturity).