

Added on: August 14, 2024 at 4:18 pm

Select Your Form

IL Extension

Name

Doug Gucker

Email

dgucker@illinois.edu

Date

August 14, 2024

County

Macon

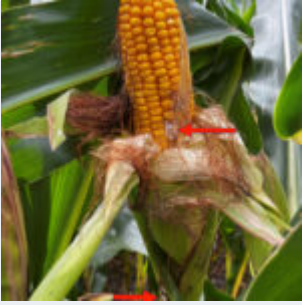
Region/State

Region 5

Field Photo Upload 1



Field Photo Upload 2



Field Photo Upload 3



Field Photo Upload Caption 1

Double crop soybeans in bloom with small pods on lower node.

Field Photo Upload Caption 2

This field suffered hail damage after ears formed. Arrows point ot hail strikes. Ear rot present. Corn in early dent - R5 stage.

Field Photo Upload Caption 3

Full season soybean field at R5 stage.

Which of the following best describes current conditions in this county?

Near Normal

Quick synopsis of conditions that will appear in the main feed

Corn is in the dough to dent stage and generally looking good. Fields that have experienced hail after the ear formed are showing ear rots. Corn leaves tattered in every field across the area. No tar spot evident, yet.

Full season Soybean are in the R4-R5 stages and plant health is good. Double crop soybeans are in bloom with small pods forming at the lower nodes.