

Added on: May 3, 2024 at 8:08 am

Select Your Form

Soy Envoys/ISA Agronomy Team/Others

Name

Shelby Weckel

Email

shelby@ehlerbros.com

Date

May 3, 2024

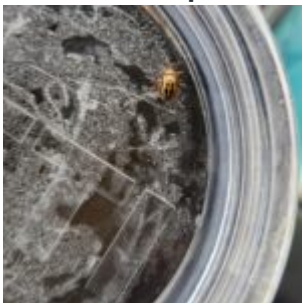
County

Champaign

Region/State

Region 5

Field Photo Upload 1



Field Photo Upload Caption 1

my first bean leaf beetle of 2024.

Which of the following best describes current conditions in this county?

Moderately Wet (soil is damp, standing water may be present in low areas, water bodies are full)

Quick synopsis of conditions that will appear in the main feed

Unfortunately, very little to report this week, but I believe most of the surrounding areas of Champaign County are in the same situation. The good news is, we have warmer temperatures, so even as it rains, it will dry the top soil out quicker than when it was cooler. Stay patient with the soil. If you can, allow it to dry to ideal conditions for planting to avoid sidewall compaction when you plant or overall compaction.

Weather

We have received significant rainfall, but we are at least in the upper 70s to 80 degree temperatures now.

Precipitation

The Month of April brought 6.8" of rain to Flatville, IL. With 3.5" falling in the last week.

We missed the rains, Thursday night and Friday morning. Maybe this is a change in the weather pattern.

Field/Soil Conditions

Soggy and wet.

Soybean Growth Stage

Some planted fields are emerging.

Corn Growth Stage

Some planted fields are emerging. Later update on stands, as a lot of this corn has been in the ground for 3 weeks.

Insects

Black cutworm moths are definitely something to monitor and be on the lookout for when you are scouting your fields. Watch for cuttings around May 20-25 in most areas. I am hoping, by the time we plant, the corn can be planted and up in 3 or 4 days, so hopefully we can avoid a major cutting situation.

I saw my first bean leaf beetle on 5/2. It landed in my pickup.

Weeds

Stay diligent on what weeds are present in your field and use label recommended rates to good control.