

Added on: July 17, 2023 at 9:04 pm

**Select Your Form**

Soy Envoys/ISA Agronomy Team/Others

**Name**

Stephanie Porter

**Email**

stephanie.porter@ilsoy.org

**Date**

July 13, 2023

**County**

Montgomery

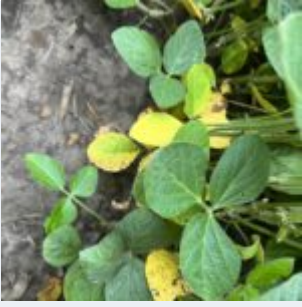
**Region/State**

Region 4

**Field Photo Upload 1**



**Field Photo Upload 2**



### Field Photo Upload 3



### Field Photo Upload Caption 1

Corn is almost fully pollinated

### Field Photo Upload Caption 2

Septoria brown spot starting on lower leaves

### Field Photo Upload Caption 3

Soybeans are at R3

### Which of the following best describes current conditions in this county?

Mildly Dry (soil is drier than normal, plant growth may have slowed)

If conditions are on the dry end, which of the following US Drought Monitor categories best fit current conditions. To better judge the fit, see explanation of USDM categories here:

<https://droughtmonitor.unl.edu/About/AbouttheData/DroughtClassification.aspx>

Near Normal (Dnada)

### Quick synopsis of conditions that will appear in the main feed

Corn is almost fully pollinated and recently had a fungicide/insecticide application. Soybeans have just reached R3 and Septoria brown spot is showing up in lower leaves. It's almost getting dry again and we will

need moisture for corn grainfill. High smoke in the air.

**Weather**

87 F

**Precipitation**

None

**Field/Soil Conditions**

Dry

**Field/Soil Activities**

Corn fungicide/insecticide applied

**Soybean Growth Stage**

R3

**Corn Growth Stage**

R1

**Insects**

A few Japanese in corn and soybeans

**Weeds**

Waterhemp escapes in corn

**Diseases**

Septoria brown spot starting to show up on lower soybean leaves